

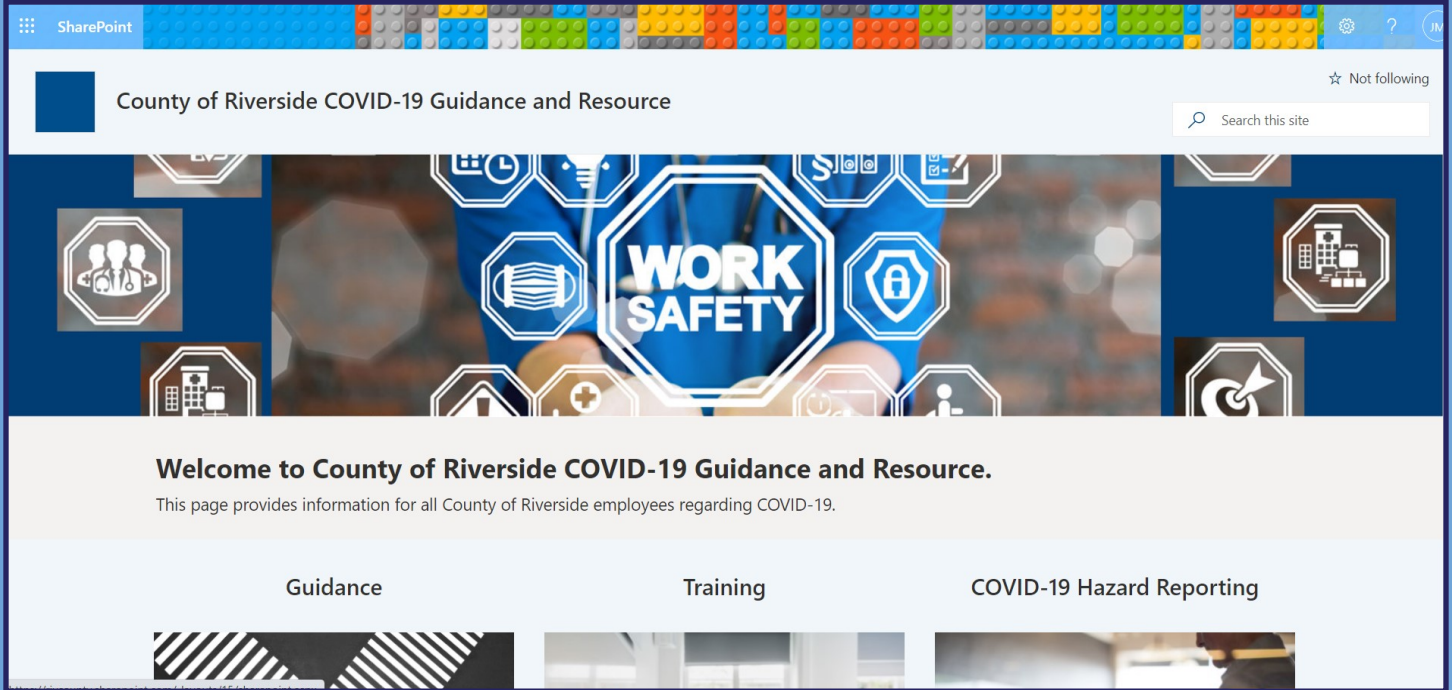


Thank you. On behalf of your Riverside County Human Resources Safety Division, we would like to thank all County employees who have worked tirelessly since the beginnings of the COVID-19 crisis to provide critical public services to the citizens of Riverside County. No one could have anticipated how 2020 would go, but through your hard work the County never faltered. We wish you a Happy and Safe New Year!



New COVID-19 Guidance and Resource Page For County Employees

COUNTY OF RIVERSIDE HUMAN RESOURCES
SAFETY DIVISION
Safety Newsletter



County Human Resources has established a new SharePoint site to assist County employees and departments in navigating the most up to date COVID regulations, mandated training and reporting tools. As County HR and the Safety Division receive new information from the State, we will place the most up to date information on this SharePoint site. To access this new tool, go to: https://rivcounty.sharepoint.com/sites/COVID_OSHACompliance .

https://rivcounty.sharepoint.com/sites/COVID_OSHACompliance



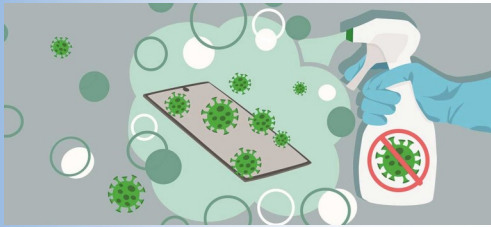
Have you taken your mandatory COVID-19 Awareness Training through HR Learning & Organizational Development (formerly COR Learning)? Learning about the virus and how to Stop the Spread is crucial to our returning to normal operations. To take the training, click [HERE](#) or go to:

<https://corlearning.sumtotal.host/core/dash/home>

COVID-19 CLEANING TIPS

COUNTY OF RIVERSIDE HUMAN RESOURCES
SAFETY DIVISION

Safety Newsletter



Cleaning and disinfecting your building or facility when someone is sick or has a COVID-19 diagnosis

- **Close off areas** used by the person who is sick.
- **Open outside doors and windows** and use fans or other [engineering controls](#) to increase air circulation in the area. **Wait 24 hours** before you clean or disinfect. If 24 hours is not feasible, wait as long as possible.
- Clean and disinfect the immediate workspace used **by the person who is sick or diagnosed with COVID-19**, such as the surfaces in their office or cubicle. If common areas such as bathrooms or shared items have already been routinely cleaned and disinfected, there is no need for additional action.
- [Vacuum the space if needed](#). Use a vacuum equipped with high-efficiency particulate air (HEPA) filter and bags, if available.
- Do not vacuum a room or space that has people in it. Wait until the room or space is empty to vacuum, such as at night, for common spaces, or during the day for private rooms.
 - ◇ Wear disposable gloves to clean and disinfect. For soft (porous) surfaces such as carpeted floors or rugs, clean the surface with detergents or cleaners appropriate for use on these surfaces, according to the textile's label. After cleaning, disinfect with an appropriate disinfectant on [EPA List N: Disinfectants for Coronavirus \(COVID-19\)](#)^{external icon}. Soft and porous materials, like carpet, are generally not as easy to disinfect as hard and non-porous surfaces. EPA has listed a limited number of products approved for disinfection for use on soft and porous materials on List N. Follow the disinfectant manufacturer's safety instructions (such as wearing gloves and ensuring adequate [ventilation](#)), for concentration level, application method and contact time. Allow sufficient drying time if vacuum is not intended for wet surfaces.
 - ◇ While vacuuming, temporarily turn off in-room, window-mounted, or on-wall recirculation HVAC to avoid contamination of the HVAC units.
 - ◇ Do NOT deactivate central HVAC systems. These systems tend to provide better filtration capabilities and introduce outdoor air into the areas that they serve.
- Once area has been **appropriately disinfected**, it **can be opened for use**.
 - ◇ If **more than 7 days** since the person who is sick visited or used the facility, additional cleaning and disinfection is not necessary. Continue routine cleaning and disinfection. This includes everyday practices that businesses and communities normally use to maintain a healthy environment.

About 1 in 3* adults used chemicals or disinfectants unsafely while trying to protect against COVID-19

Stay safe while using household cleaning and disinfectant products



Always read instructions



Wear protective gear



Do not mix chemicals

*According to a nationally representative survey of 502 U.S. adults—May 4, 2020

GET VACCINATED!

COUNTY OF RIVERSIDE HUMAN RESOURCES
SAFETY DIVISION

Safety Newsletter

A safe and effective COVID-19 vaccine will be one of the most important tools to end the COVID-19 pandemic. California is planning to distribute and administer vaccines as quickly as possible. A safe and effective COVID-19 vaccine will be one of the most important tools to end the COVID-19 pandemic. California is planning to distribute and administer vaccines as quickly as possible.

This will be done only after a vaccine's safety has been reviewed and approved by top health experts. Initial vaccine supply will be limited, and California is making sure that these first vaccines are distributed and administered equitably. The first vaccines will be provided to healthcare workers and residents of long-term care facilities.

It will take some time before the vaccine is available to everyone, and while experts learn more about the protection vaccines provide, it's important to keep using all the tools available to us to help stop the pandemic. This includes wearing masks, washing hands, staying 6 feet apart.

At first, the limited supplies of vaccines will go to frontline healthcare workers and residents of long-term care facilities. As the supply of vaccine increases, those with the highest risk of becoming infected and spreading COVID-19 will receive vaccines.

For questions about the COVID-19 vaccine, call [833.422.4255](tel:833.422.4255) or visit <https://covid19.ca.gov/vaccines>. You may also email: rivco.vaccines@ruhealth.org.



COVID-19 Vaccine Schedule

Together we can end the pandemic

PHASE 1a

Persons at risk of exposure to SARS-CoV-2 through their work
In any role in direct health care of long-term care settings

Vaccinating NOW

Tier 1

- Acute Care
- Skilled Nursing Facilities and Assisted Living Facilities (medically vulnerable individuals)
- First Responders (paramedic/EMTs)
- Correctional Hospitals
- Behavior Health (psychiatric)
- Dialysis Centers (staff)
- Pharmacies*(vaccinating public)

*Assisting the county in vaccination efforts

Vaccinating NOW

Tier 2

- Intermediate Care Facilities
- Home Health and IHSS
- Public Health (field)/DPSS
- Community Health Workers
- Primary Care & Community Clinics
- Urgent Cares (stand-alone)

Vaccinating NOW

Tier 3

- Specialty Clinics
- Laboratory Workers
- Dental/Oral Health Clinics
- Pharmacy Staff (not working in setting at higher tiers)
- Mortuary Services Industries

PHASE 1b

- Persons age 75 years and older
- Healthcare Personnel not included in 1-A
- Law Enforcement Personnel (firefighters, police officers, correctional officers)
- Food Packing & Distribution Centers
- Agriculture, Manufacturing & Grocery Workers
- Teachers, School Staff & Childcare Providers
- The High Risk for Severe Illness with Underlying Conditions
- U.S. Postal Services Workers
- Public Transit Workers

PHASE 1c

- Persons 65 - 74 years
- Persons aged 16 - 64 years with Medical Conditions that Increase the Risk for Severe COVID-19
- All Other Essential Workers:
 - Transportation & Logistics
 - Water & Waste
 - Food Service, Shelter and Housing (e.g., Construction)
 - Finance (e.g., Banker Tellers)
 - Information Technology, Communications, Energy, Legal, Media & Public Safety (e.g., Engineers)
 - Public Health Workers

Currently there are limited supplies of vaccine. This information will be updated when supplies improve

<https://www.ruhealth.org/covid-19-vaccine>

Revised 1/5/2021

CLEANING SAFETY

6 Steps for Safe & Effective Disinfectant Use



Step 1: Check that your product is EPA-approved

Find the EPA registration number on the product. Then, check to see if it is on EPA's list of approved disinfectants at: epa.gov/letn



Step 2: Read the directions

Follow the product's directions. Check "use sites" and "surface types" to see where you can use the product. Read the "precautionary statements."

Step 3: Pre-clean the surface

Make sure to wash the surface with soap and water if the directions mention pre-cleaning or if the surface is visibly dirty.



Step 4: Follow the contact time

You can find the contact time in the directions. The surface should remain wet the whole time to ensure the product is effective.

Step 5: Wear gloves and wash your hands

For disposable gloves, discard them after each cleaning. For reusable gloves, dedicate a pair to disinfecting COVID-19. Wash your hands after removing the gloves.



Step 6: Lock it up

Keep lids tightly closed and store out of reach of children.

coronavirus.gov

CASES ARE RISING.
ACT NOW!



WEAR A MASK



STAY 6 FEET APART



AVOID CROWDS